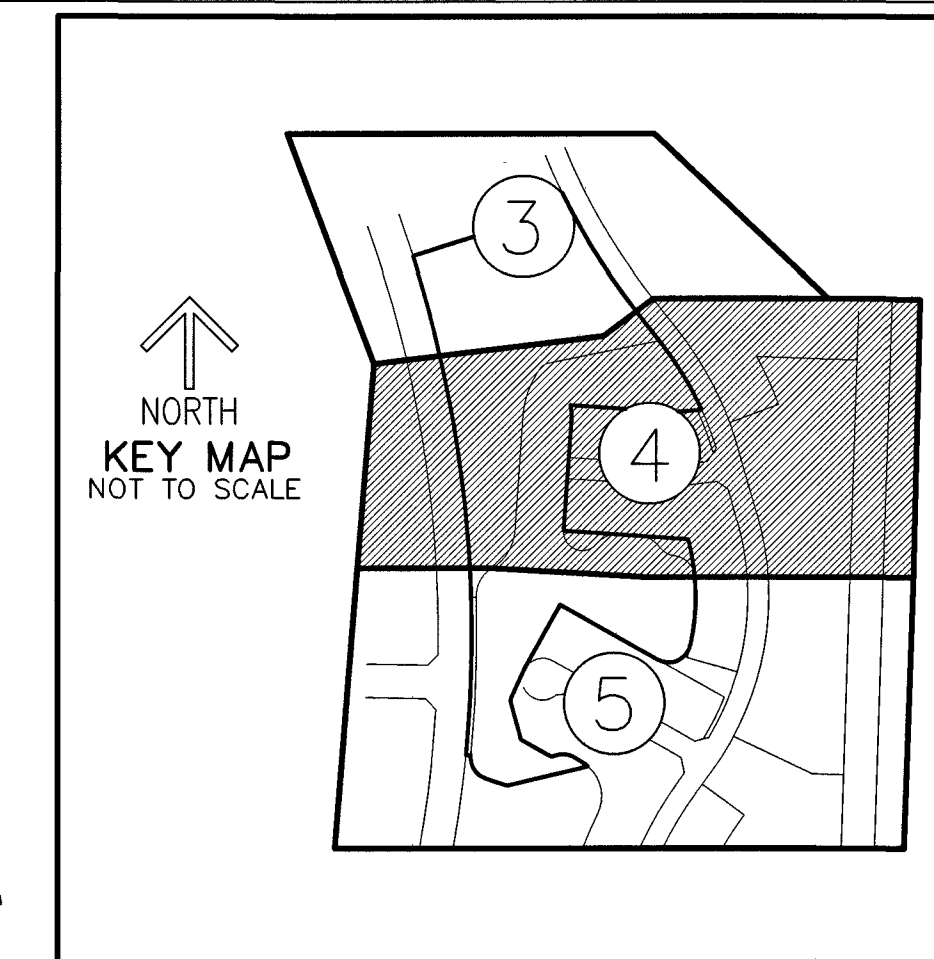


THIS INSTRUMENT PREPARED BY
DAVID P. LINDLEY
OF
CAULFIELD and WHEELER, INC.
SURVEYORS - ENGINEERS - PLANNERS
7900 GLADES ROAD, SUITE 100
BOCA RATON, FLORIDA 33434 - (561)392-1991
CERTIFICATE OF AUTHORIZATION NO. LB3591
JUNE-2024

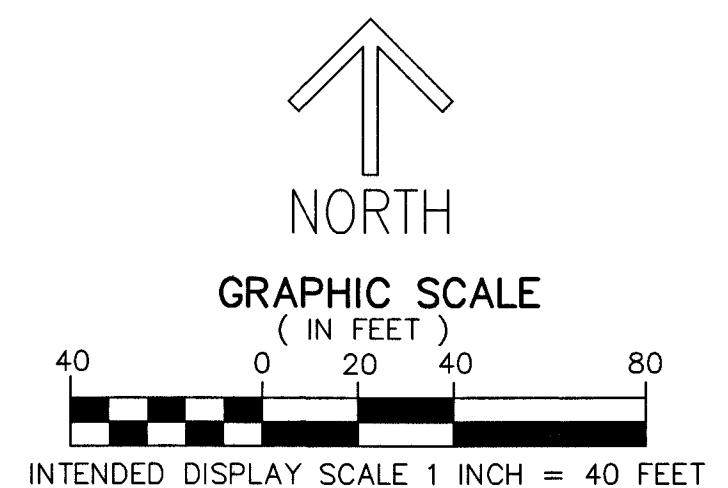
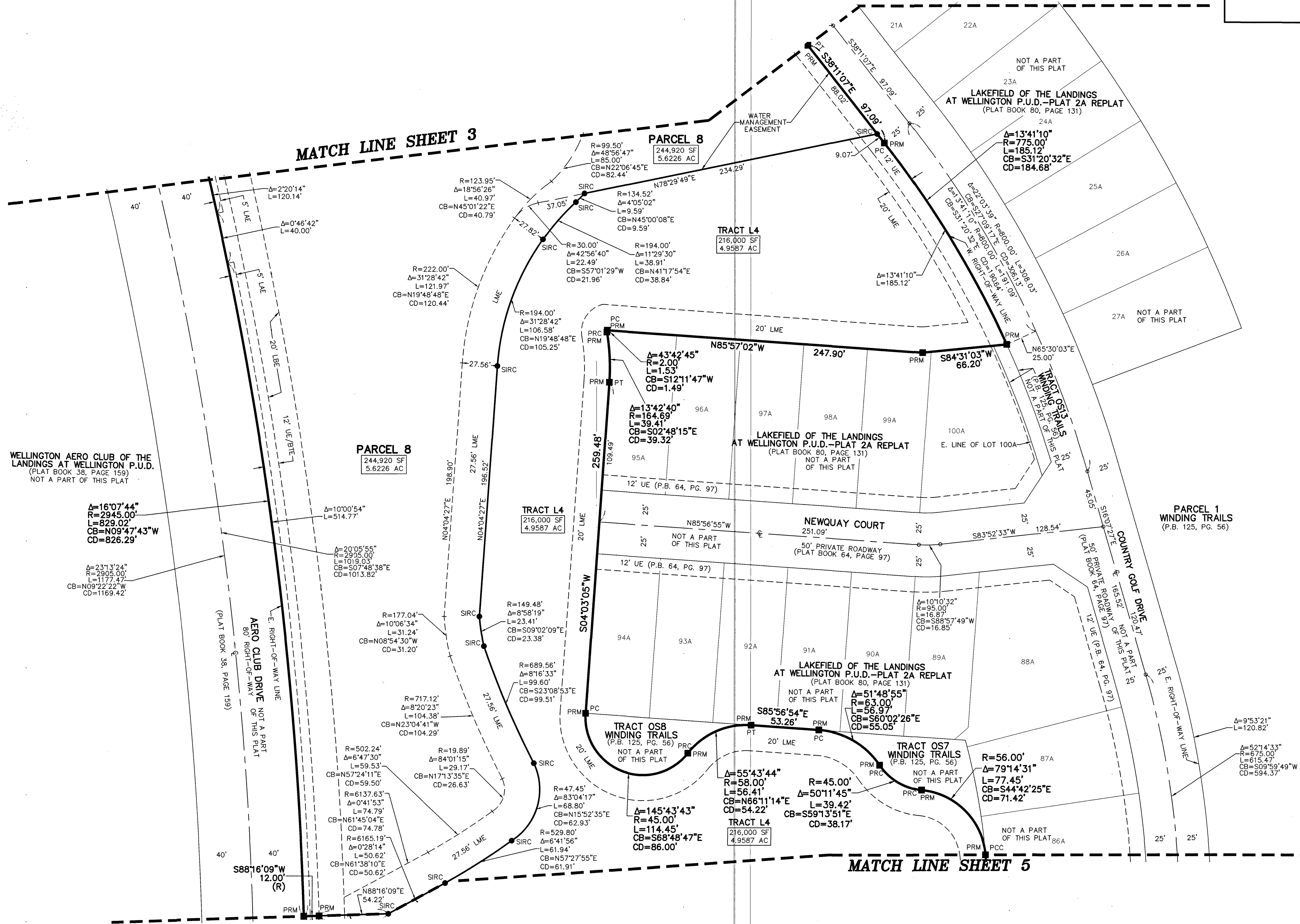
WINDING TRAILS REPLAT

BEING A REPLAT OF PARCEL 8 AND TRACT L4, WINDING TRAILS,
AS RECORDED IN PLAT BOOK 125, PAGES 56 THROUGH 69 OF THE PUBLIC RECORDS OF PALM BEACH COUNTY, FLORIDA,
LYING IN SECTION 18, TOWNSHIP 44 SOUTH, RANGE 41 EAST, VILLAGE OF WELLINGTON, PALM BEACH COUNTY, FLORIDA



146

SHEET 4 OF 5



- LEGEND/ABBREVIATIONS**
- CL - CENTERLINE
 - CA - DELTA (CENTRAL ANGLE)
 - AC - ACRES
 - BLVD - BOULEVARD
 - BTE - BRIDLE TRAIL EASEMENT
 - (C#) - CURVE IDENTIFICATION
 - CB - LONG CHORD BEARING
 - CD - LONG CHORD DISTANCE
 - DE - DRAINAGE EASEMENT
 - ID - IDENTIFICATION
 - L - ARC LENGTH
 - LAE - LIMITED ACCESS EASEMENT
 - LB - LICENSED BUSINESS
 - LBE - LANDSCAPE BUFFER EASEMENT
 - LME - LAKE MAINTENANCE EASEMENT
 - LMAE - LAKE MAINTENANCE ACCESS EASEMENT
 - MPPE - MULTI PURPOSE PATH EASEMENT
 - O.R.B. - OFFICIAL RECORD BOOK (PALM BEACH COUNTY RECORDS)
 - P.B. - PLAT BOOK (PALM BEACH COUNTY RECORDS)
 - PG. - PAGE
 - PC - POINT OF CURVATURE
 - PCC - POINT OF COMPOUND CURVATURE
 - PRC - POINT OF REVERSE CURVATURE
 - PT - POINT OF TANGENCY
 - R - RADIUS
 - (R) - INDICATES RADIAL LINE
 - SF - SQUARE FEET
 - UE - UTILITY EASEMENT
 - WSE - WATER AND SEWER EASEMENT
 - PRM - DENOTES SET PERMANENT REFERENCE MONUMENT
 - 5/8" IRON ROD WITH CAP STAMPED "PRM C&W PRM LB#3591" UNLESS OTHERWISE NOTED.
 - 5/8" IRON ROD WITH CAP STAMPED "C&W LB#3591" UNLESS OTHERWISE NOTED.